

1

2

3

4

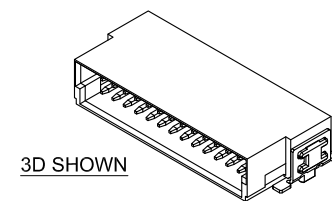
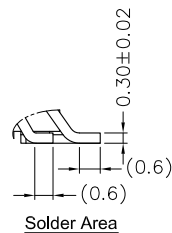
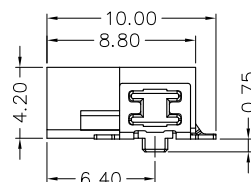
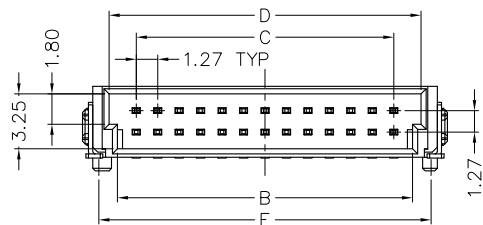
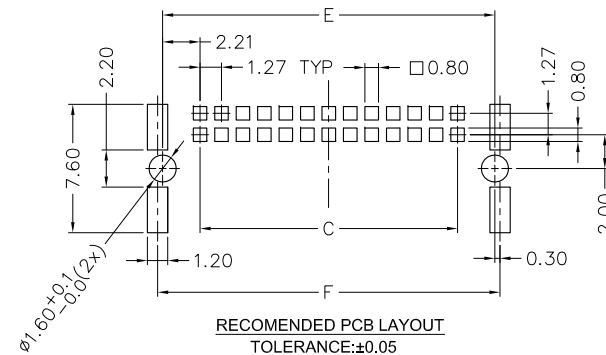
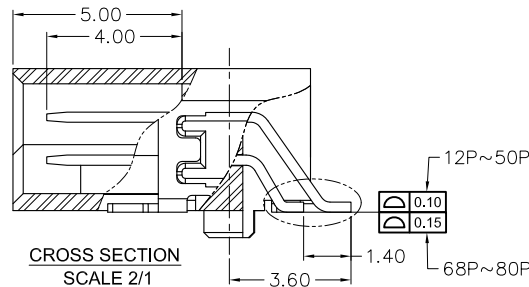
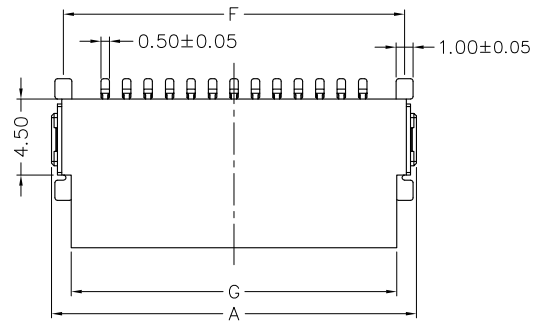
5

A

B

C

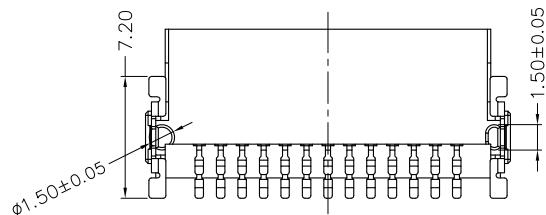
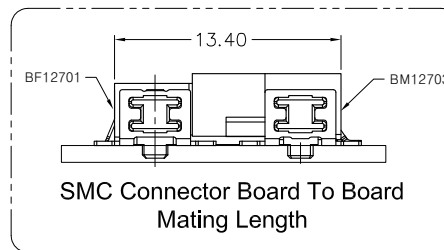
D



< ORDERING INFORMATION >

BM12703 XX 600 X

SERIES NO. _____ PACKAGE 3: Tape & Reel
 1.27 SMC Male Connector
 Right Angle SMT Type
 CONTACT POSITION _____
 See DIM-TABLE
 CONTACT PLATING _____
 100: Full Gold Flash (1μ" Min.) Plated,
 * 600: Selective Gold Flash (1μ" Min.) Plated,
 605: 5μ" selective Gold Plated,
 630: 30μ" selective Gold Plated,



				DREWN:	GENERAL TOLERANCE:	ALMITA CO., LTD.	DESCRIPTION: 1.27 SMC Male Connector Right Angle SMT Type	SIZE A4
				CHECKED:	.X= ±0.20 .XX= ±0.15			
					UNIT: MM			
					SCALE: 1:1			
A	2018-05-02			APPROVAL:	SHEET: 1 / 2	PART NO:	SMC\BM12703\BM12703_A	
REV	DATE	FILE	BY		PROJECTION:			

				DREWN:	GENERAL TOLERANCE:
				CHECKED:	.X= ±0.20 .XX= ±0.15
					UNIT: MM
					SCALE: 1:1
A	2018-05-02			APPROVAL:	SHEET: 1 / 2
REV	DATE	FILE	BY		PROJECTION:

				DREWN:	GENERAL TOLERANCE:	ALMITA CO., LTD.	DESCRIPTION: 1.27 SMC Male Connector Right Angle SMT Type	SIZE A4
				CHECKED:	.X= ±0.20 .XX= ±0.15			
					UNIT: MM			
					SCALE: 1:1			
A	2018-05-02			APPROVAL:	SHEET: 1 / 2	PART NO:	SMC\BM12703\BM12703_A	
REV	DATE	FILE	BY		PROJECTION:			

1

2

3

4

5

Specification

Insulator Material: High Temp. Thermoplastic, UL94V-0.
 Contact Material: Phosphor Bronze.
 Board Lock Material: Brass.
 Contact Plating: Au (1 μ " / 5 μ " / 30 μ " Min.) on Contact Area.
 Au (1 μ " Min.) or Sn (100 μ " Min.) on Soldertail.
 Nickle (Contact - 80 μ " Min. / Soldertail - 50 μ " Min.)
 Sn(100 μ " Min.) over Nickel (40 μ " Min.)

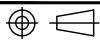
Board Lock Plating: Sn(100 μ " Min.) over Nickel (40 μ " Min.)

Current Resistance: 1.2A Max.
 Contact Resistance: 25 Milliohms Max.
 Insulator Resistance: 1000 Megohms Min.
 Dielectric Withstanding: 500V AC for 1 Minute.
 Operating Temperature: -55°C ~ +125°C.
 Max. Processing Temp.: 230°C for 30~60 seconds.
 260°C for 10 seconds.

Durability Test: 500 mating cycles
 Insertion Force: 0.8N Max. (Per Contact)
 Withdrawal Force: 0.4N Min. (Per Contact)

DIM-TABLE

PIN NO.	DIM A	DIM B	DIM C	DIM D	DIM E	DIM F	DIM G
12	12.70	8.57	6.35	9.57	10.77	11.34	10.37
16	15.24	11.11	8.89	12.11	13.31	13.88	12.91
20	17.78	13.65	11.43	14.65	15.85	16.42	15.45
26	21.59	17.46	15.24	18.46	19.66	20.23	19.26
30	24.13	20.00	17.78	21.00	22.20	22.77	21.80
32	25.40	21.27	19.05	22.27	23.47	24.04	23.07
40	30.48	26.35	24.13	27.35	28.55	29.12	28.15
50	36.83	32.70	30.48	33.70	34.90	35.47	34.50
68	48.26	44.13	41.91	45.13	46.33	46.90	45.93
80	55.88	51.75	49.53	52.75	53.95	54.52	53.55

				DREWN:	GENERAL TOLERANCE:	ALMITA CO., LTD.	
				CHECKED:	.X= ± 0.20 .XX= ± 0.15		
				APPROVAL:	UNIT: MM	DESCRIPTION: 1.27 SMC Male Connector Right Angle SMT Type	SIZE A4
A	2018-05-02				SHEET: 2 / 2		
REV	DATE	FILE	BY	PROJECTION:		SMC\BM12703\BM12703_A	