

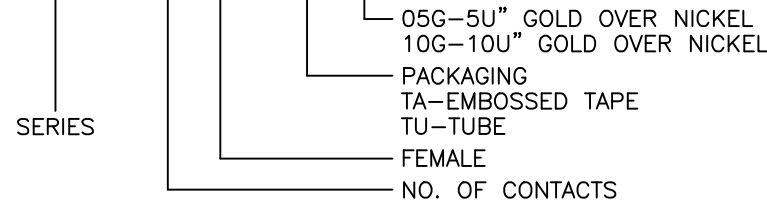
REV.	ECN NO.	DATE
A	RELEASED	2004.02.10

LEAD FREE

NOTE:

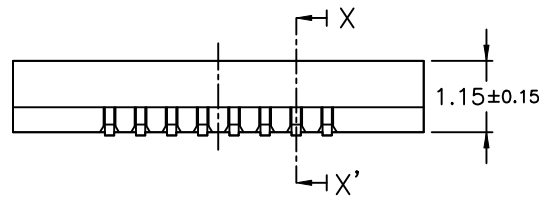
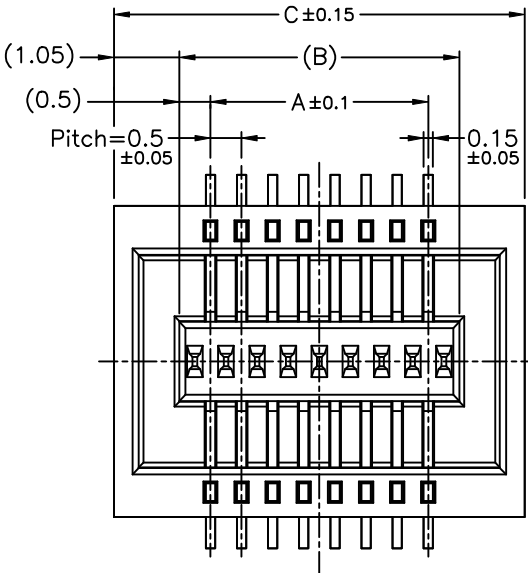
- 1.MATERIAL:
HOUSING:THERMOPLASTIC
CONTACTS:COPPER ALLOY
- 2.PLATING:SEE ORDERING INFORMATION
- 3.PART NO.:

BB515- xxx F - xx xxx

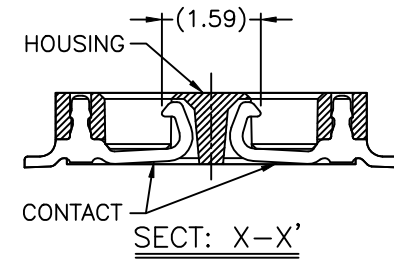
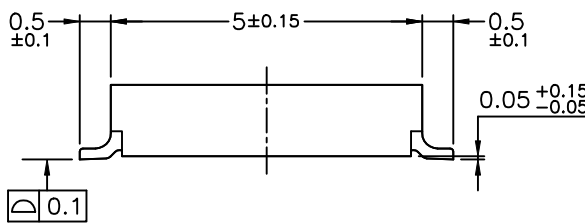
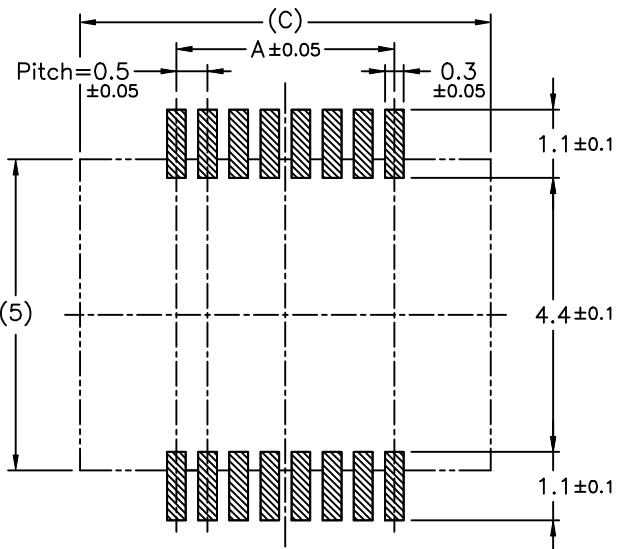


4.RATING:

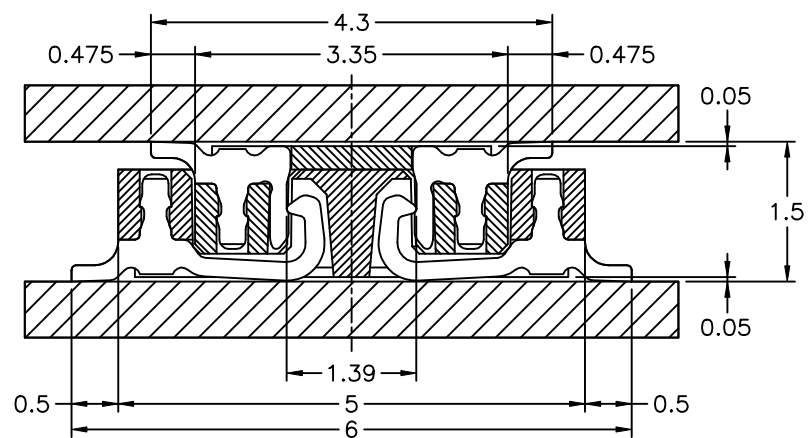
OPERATING VOLTAGE:50V
CURRENT RATING:0.5A
OPERATING TEMPERATURE:-25°C ~ +85°C



PCB Layout



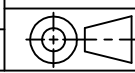
MATED DRAWING(REF.)



SCALE: 12/1

No. of Contacts	Catalog No.	DIM. A	DIM. B	DIM. C
10	BB515-010F	2	3	5.1
12	BB515-012F	2.5	3.5	5.6
14	BB515-014F	3	4	6.1
16	BB515-016F	3.5	4.5	6.6
18	BB515-018F	4	5	7.1
20	BB515-020F	4.5	5.5	7.6
22	BB515-022F	5	6	8.1
24	BB515-024F	5.5	6.5	8.6
26	BB515-026F	6	7	9.1
28	BB515-028F	6.5	7.5	9.6
30	BB515-030F	7	8	10.1
32	BB515-032F	7.5	8.5	10.6
34	BB515-034F	8	9	11.1
36	BB515-036F	8.5	9.5	11.6
38	BB515-038F	9	10	12.1
40	BB515-040F	9.5	10.5	12.6
42	BB515-042F	10	11	13.1
44	BB515-044F	10.5	11.5	13.6
46	BB515-046F	11	12	14.1
48	BB515-048F	11.5	12.5	14.6
50	BB515-050F	12	13	15.1
52	BB515-052F	12.5	13.5	15.6
54	BB515-054F	13	14	16.1
56	BB515-056F	13.5	14.5	16.6
58	BB515-058F	14	15	17.1
60	BB515-060F	14.5	15.5	17.6
62	BB515-062F	15	16	18.1
64	BB515-064F	15.5	16.5	18.6
66	BB515-066F	16	17	19.1
68	BB515-068F	16.5	17.5	19.6
70	BB515-070F	17	18	20.1
72	BB515-072F	17.5	18.5	20.6
74	BB515-074F	18	19	21.1
76	BB515-076F	18.5	19.5	21.6
78	BB515-078F	19	20	22.1
80	BB515-080F	19.5	20.5	22.6
82	BB515-082F	20	21	23.1
84	BB515-084F	20.5	21.5	23.6
86	BB515-086F	21	22	24.1
88	BB515-088F	21.5	22.5	24.6
90	BB515-090F	22	23	25.1
92	BB515-092F	22.5	23.5	25.6
94	BB515-094F	23	24	26.1
96	BB515-096F	23.5	24.5	26.6
98	BB515-098F	24	25	27.1
100	BB515-100F	24.5	25.5	27.6

TOLERANCE UNLESS SPECIFIED		SHEET	DR. BY Bonnie LI	MATERIAL SEE NOTE 1
LINEAR	ANGLE	SCALE 8/1	CHK. BY S.T.LIN	FINISH SEE NOTE 2
.X	.X°	UNIT mm	APP. BY S.T.LIN	PART NO. SEE NOTE 3
.XX	.X°			
.XXX	.XX°			



TITLE 0.5mm Pitch B-T0-B Connector
DWG NO.C1/BOOK/BOOK/BB515/HP-ND