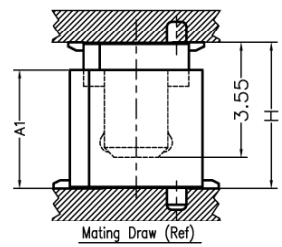
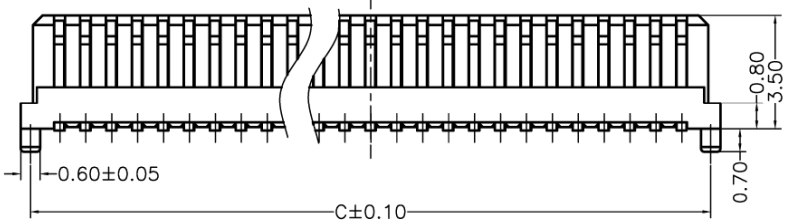


Specifications

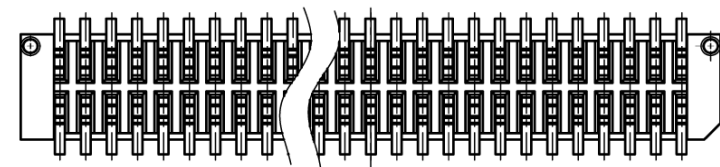
Current Rating:0.5A AC/DC
 Voltage Rating:100V AC/DC
 Contact Resistance:40m ohm. Max
 Insulation Resistance:100Mohm min
 Withstanding Voltage:500V(r.m.s) For one Minute
 Operating Temperature Range:-40°C to 105°C
 Materials:

Insulator:High Temp. Plastic(Nylon 46 UL94V-0 White)
 Contact :Phosphor Bronze
 Plated:Gold Plated



How To Order:
 BF08-XXG-355

Height 3.55mm
 Gold Plated
 No. of Contacts

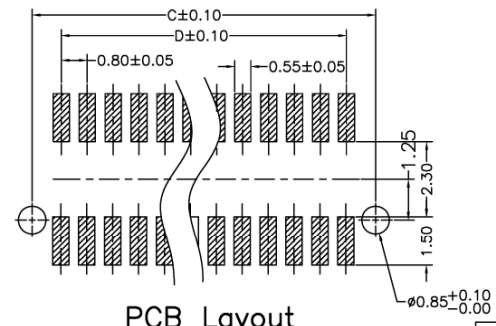


Contacts Dimension :

Number of Position	A	B	C	D	Number of Position	A	B	C	D
10	5.60	4.85	5.00	3.20	34	15.20	14.45	14.60	12.80
12	6.40	5.65	5.80	4.00	36	16.00	15.25	15.40	13.60
14	7.20	6.45	6.60	4.80	38	17.80	16.05	16.20	14.40
16	8.00	7.25	7.40	5.60	40	17.80	16.85	17.00	15.20
18	8.80	8.05	8.20	6.40	50	21.60	20.85	21.00	19.20
20	9.60	8.85	9.00	7.20	60	25.60	24.85	25.00	23.20
22	10.40	9.65	9.80	8.00	68	28.80	28.05	28.20	26.40
24	11.20	10.45	10.60	8.80	70	29.60	28.85	29.00	27.20
26	12.00	11.25	11.40	9.60	80	33.60	32.85	33.00	31.20
28	12.80	12.05	12.20	10.40	90	37.60	36.85	37.00	35.20
30	13.60	12.85	13.00	11.20	100	41.60	40.85	41.00	39.20
32	14.40	13.65	13.80	12.00					

****Mating Height Dimension**

P/N(Plug)	P/N(Socket)	Mating Height Dim A1	Mating Height Dim H
BM08-XXG-365	BF08-XXG-355	3.65	4.50
BM08-XXG-415	BF08-XXG-355	4.15	5.00
BM08-XXG-515	BF08-XXG-355	5.15	6.00
BM08-XXG-565	BF08-XXG-355	5.65	6.50
BM08R-XXG-470	BF08-XXG-355	4.70	5.65



PCB Layout

RoHS Compliant

				DRAWN: Cel king	GENERAL TOLERANCE: .X=±0.20 .XX=±0.15			
				CHECKED: Jerry Chen	UNIT: MM	DESCRIPTION: 0.8mm Board To Board Female 3.55mm Height		SIZE A4
C	27-Oct-2005	ECN-CN051009	Jeremy Liu	APPROVAL: Mike Wu	SCALE:20:1	PART NO: BF08-XXG-355		
B	29-Mar-2005	ECN-CN050333	Jeremy Liu		SHEET: 1 / 1			
A	22-Jul-2004	(PC0001)	Jeremy Liu		PROJECTION:			
REV	DATE	FILE	BY					