

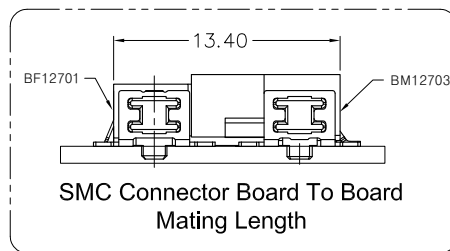
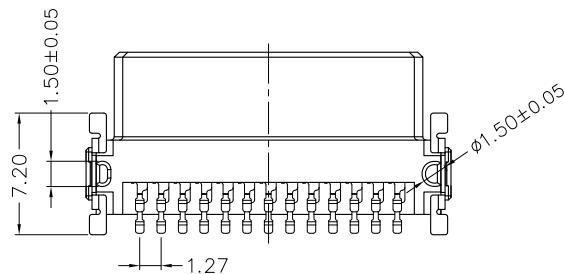
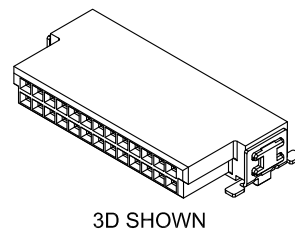
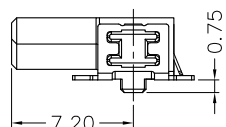
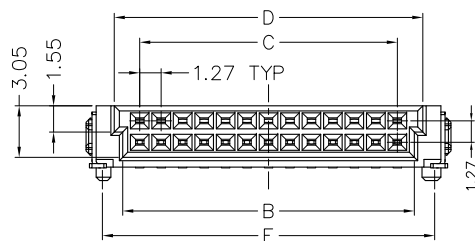
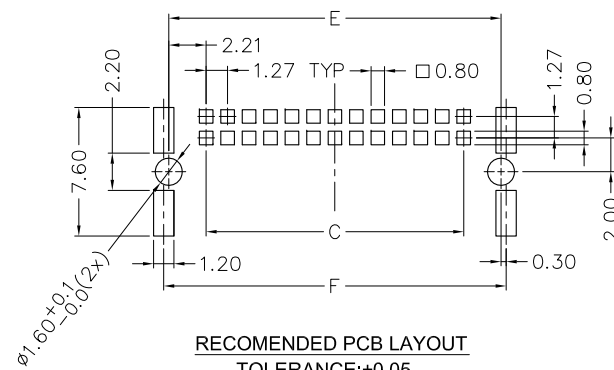
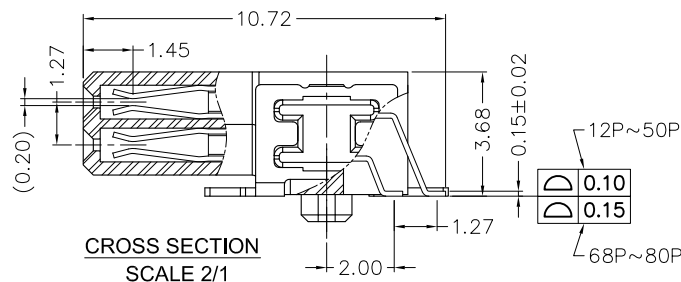
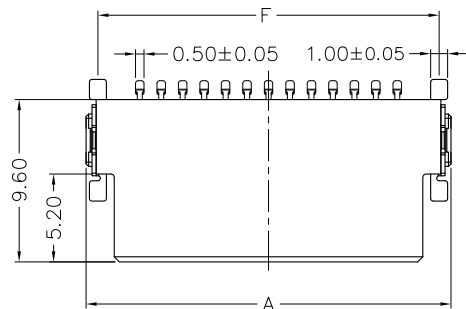
1

2

3

4

5



< ORDERING INFORMATION >

BF12701 XX 600 X

SERIES NO. _____ PACKAGE
 1.27 SMC Female Connector Right Angle SMT Type 3: Tape & Reel

CONTACT POSITION _____
 See DIM-TABLE

CONTACT PLATING _____
 100: Full Gold Flash (1μ" Min.) Plated,
 * 600: Selective Gold Flash (1μ" Min.) Plated,
 605: 5μ" selective Gold Plated,
 630: 30μ" selective Gold Plated,

A	2018-05-02		
REV	DATE	FILE	BY

DREWN:	GENERAL TOLERANCE:
CHECKED:	.X= ±0.20 .XX= ±0.15
APPROVAL:	UNIT: MM
	SCALE: 1:1
	SHEET: 1 / 2
	PROJECTION:

ALMITA CO., LTD.	
DESCRIPTION:	SIZE
1.27 SMC Female Connector Right Angle SMT Type	A4
PART NO:	
SMC\BF12701\BF12701_A	

A

B

C

D

1

2

3

4

5

Specification

Insulator Material: High Temp. Thermoplastic, UL94V-0.
 Contact Material: Phosphor Bronze.
 Board Lock Material: Brass.
 Contact Plating: Au (1 μ " / 5 μ " / 30 μ " Min.) on Contact Area.
 Au (1 μ " Min.) or Sn (100 μ " Min.) on Soldertail.
 Board Lock Plating: Nickle (Contact - 80 μ " Min. / Soldertail - 50 μ " Min.)
 Sn(100 μ " Min.) over Nickel (40 μ " Min.)
 Current Resistance: 1.2A Max.
 Contact Resistance: 25 Milliohms Max.
 Insulator Resistance: 1000 Megohms Min.
 Dielectric Withstanding: 500V AC for 1 Minute.
 Operating Temperature: -55°C ~ +125°C.
 Max. Processing Temp.: 230°C for 30~60 seconds.
 260°C for 10 seconds.
 Durability Test: 500 mating cycles
 Insertion Force: 0.8N Max. (Per Contact)
 Withdrawal Force: 0.4N Min. (Per Contact)

DIM-TABLE

PIN NO.	DIM A	DIM B	DIM C	DIM D	DIM E	DIM F
12	12.70	8.37	6.35	9.37	10.77	11.34
16	15.24	10.91	8.89	11.91	13.31	13.88
20	17.78	13.45	11.43	14.45	15.85	16.42
26	21.59	17.26	15.24	18.26	19.66	20.23
30	24.13	19.80	17.78	20.80	22.20	22.77
32	25.40	21.07	19.05	22.07	23.47	24.04
40	30.48	26.15	24.13	27.15	28.55	29.12
50	36.83	32.50	30.48	33.50	34.90	35.47
68	48.26	43.93	41.91	44.93	46.33	46.90
80	55.88	51.55	49.53	52.55	53.95	54.52

				DREWN:	GENERAL TOLERANCE:	ALMITA CO., LTD.	
				CHECKED:	.X= ± 0.20 .XX= ± 0.15		
				APPROVAL:	UNIT: MM	DESCRIPTION: 1.27 SMC Female Connector Right Angle SMT Type	SIZE A4
A	2018-05-02				SCALE: 1:1		
REV	DATE	FILE	BY		SHEET: 2 / 2	PART NO: SMC\BF12701\BF12701_A	
					PROJECTION: 