

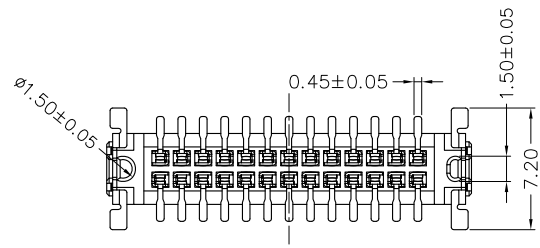
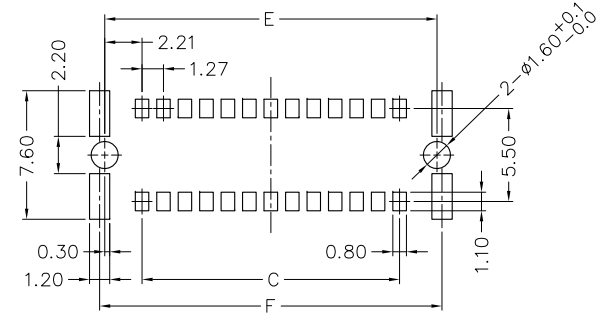
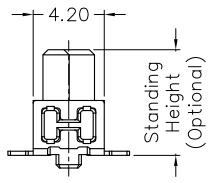
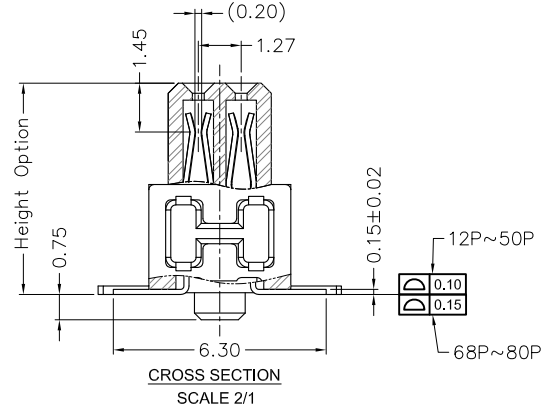
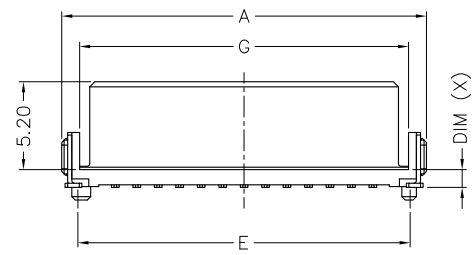
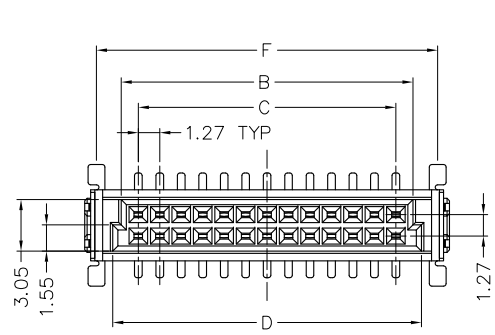
1

2

3

4

5



DIM-TABLE

PIN NO.	DIM A	DIM B	DIM C	DIM D	DIM E	DIM F	DIM G
12	12.70	8.37	6.35	9.37	10.77	11.34	10.57
16	15.24	10.91	8.89	11.91	13.31	13.88	13.11
20	17.78	13.45	11.43	14.45	15.85	16.42	15.65
24	20.32	15.99	13.97	16.99	18.39	18.96	18.19
26	21.59	17.26	15.24	18.26	19.66	20.23	19.46
30	24.13	19.80	17.78	20.80	22.20	22.77	22.00
32	25.40	21.07	19.05	22.07	23.47	24.04	23.27
40	30.48	26.15	24.13	27.15	28.55	29.12	28.35
50	36.83	32.50	30.48	33.50	34.90	35.47	34.70
68	48.26	43.93	41.91	44.93	46.33	46.90	46.13
80	55.88	51.55	49.53	52.55	53.95	54.52	53.75

< ORDERING INFORMATION >

BF12702 XX X XXX 00 2

SERIES NO. _____
 1.27 SMC Female Connector
 Vertical SMT Type

CONTACT POSITION _____
 SEE DIM-TABLE

STANDING HEIGHT _____
 A: 6.25 , X=1.05
 B: 9.05 , X=3.85
 C: 13.65 , X=8.45

CONTACT PLATING _____
 100: Full Gold Flash (1μ" Min.) Plated,
 *600: Selective Gold Flash (1μ" Min.) Plated,
 605: 5μ" selective Gold Plated,
 630: 30μ" selective Gold Plated,

PACKAGE 3: Tape & Reel

CAP OPTION: 01: With CAP

A	2018-05-02		
REV	DATE	FILE	BY

DREWN: _____

CHECKED: _____

APPROVAL: _____

GENERAL TOLERANCE:
 .X= ±0.20
 .XX= ±0.15

UNIT: MM

SCALE: 1:1

SHEET: 1 / 2

PROJECTION:

ALMITA CO., LTD.

DESCRIPTION:
 1.27 SMC Female Connector Vertical SMT Type

PART NO:
 SMC\BF12702\BF12702_A

SIZE
 A4

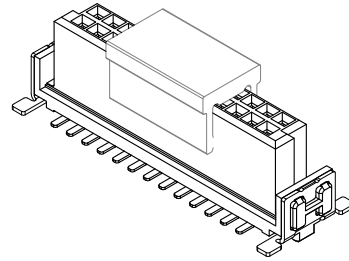
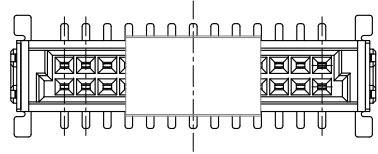
1

2

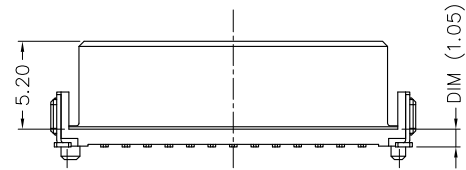
3

4

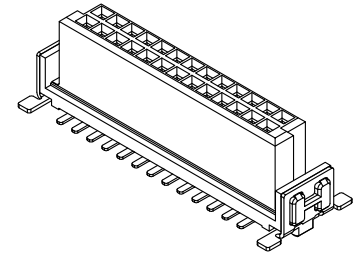
5



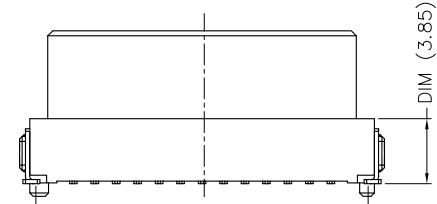
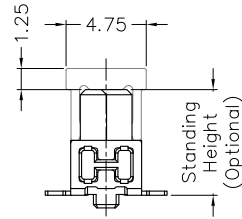
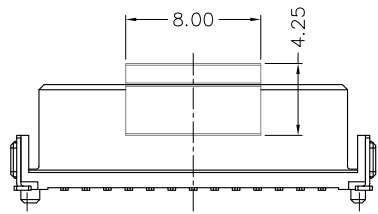
STANDING HEIGHT : A
With Cap Type



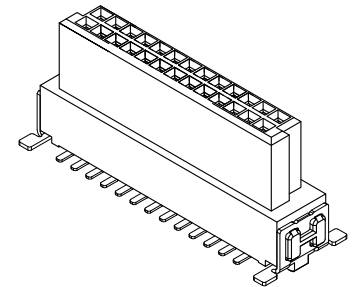
STANDING HEIGHT : A
DIMENSION (X)



A



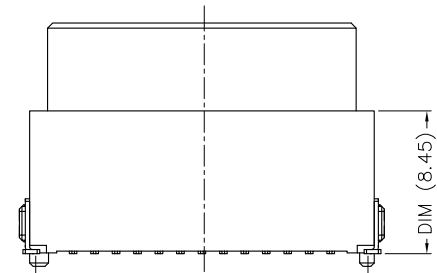
STANDING HEIGHT : B
DIMENSION (X)



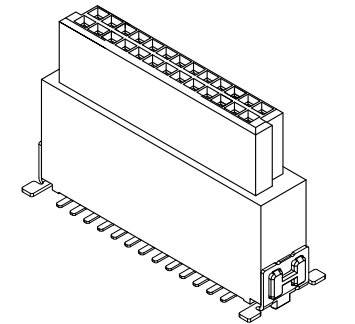
B

Specification

Insulator Material: High Temp. Thermoplastic, UL94V-0.
 Contact Material: Phosphor Bronze.
 Board Lock Material: Brass.
 Contact Plating: Au (1 μ " / 5 μ " / 30 μ " Min.) on Contact Area.
 Au (1 μ " Min.) or Sn (100 μ " Min.) on Solder-tail.
 Nickle (Contact - 80 μ " Min.)
 / Solder-tail - 50 μ " Min.)
 Board Lock Plating: Sn(100 μ " Min.) over Nickel (40 μ " Min.)
 Current Resistance: 1.2A Max.
 Contact Resistance: 25 Milliohms Max.
 Insulator Resistance: 1000 Megohms Min.
 Dielectric Withstanding: 500V AC for 1 Minute.
 Operating Temperature: -55°C ~ +125°C.
 Max. Processing Temp.: 230°C for 30~60 seconds.
 260°C for 10 seconds.
 Durability Test: 500 mating cycles
 Insertion Force: 0.8N Max. (Per Contact)
 Withdrawal Force: 0.4N Min. (Per Contact)



STANDING HEIGHT : C
DIMENSION (X)



C

				DREWN: CHECKED: APPROVAL:	GENERAL TOLERANCE: .X= ± 0.20 .XX= ± 0.15 UNIT: MM SCALE: 1:1 SHEET: 2 / 2 PROJECTION:	<h1>ALMITA CO., LTD.</h1>		
A	2018-05-02					DESCRIPTION: 1.27 SMC Female Connector Vertical SMT Type PART NO: SMC\BF12702\BF12702_A	SIZE A4	D
REV	DATE	FILE	BY					